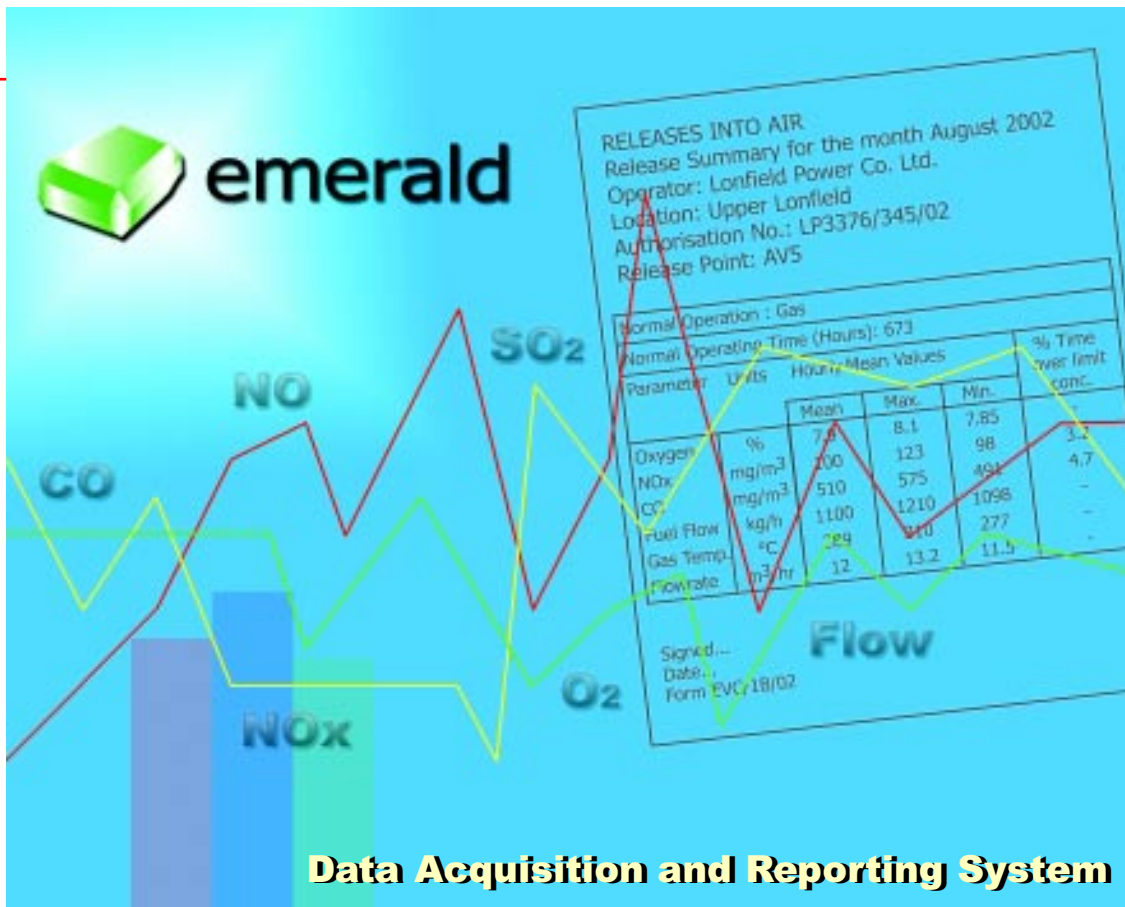


# continuous emissions monitoring



**LAND**  
instruments international

**Combustion & Environmental Monitoring**



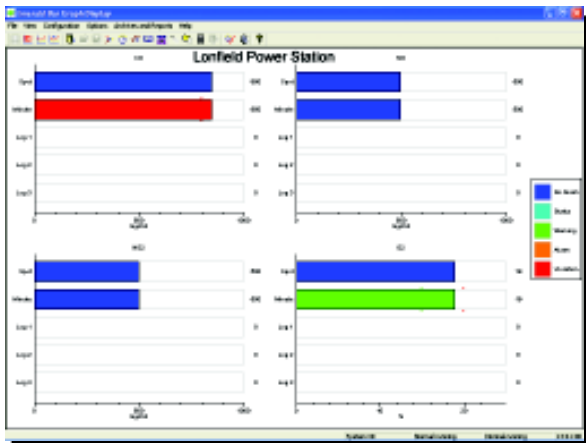
# emerald

## data acquisition and reporting system

Emerald is a highly flexible and fully configurable data acquisition and reporting system for continuous emissions monitoring. This inherent flexibility enables Emerald to meet the requirements of Environmental Regulation Authorities throughout the world.

### Features and Benefits

- Meets your local environmental regulations - *Flexible configuration, adaptable to future requirements*
- Simple to install on plant - *Analogue, digital & serial communications using two-wire connections*
- Comprehensive, versatile system configuration - *Trends, reports, tables, averages, statistics, etc.*
- Data meets known compliance standards - *Full measurement correction & normalisation capability*
- Automatic report generation - *Archives and prints at required intervals*
- Easy data access - *Modbus link to SCADA/DCS*
- System responds to continuous process changes - *Event driven decision making*



Bar Chart display format

### Flexible setup, simple operation

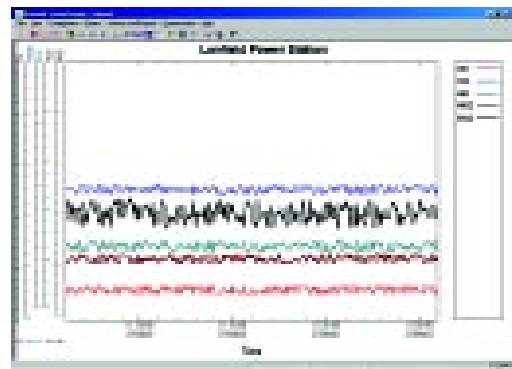
Emerald is both simple to use and highly flexible, using the power and simplicity of Windows™. Configuration and operation are fully menu-controlled and most routine functions can be fully automated.

- ▶ Data displayed as tables or graphs
- ▶ Real-time or historical data display
- ▶ Customised display formats
- ▶ Continuous event log
- ▶ Automatic report generation
- ▶ Password-controlled system access
- ▶ Data export in ASCII format

### Meets all demands of Compliance Monitoring

Emerald has been engineered to meet current and future compliance monitoring requirements. Normalisations and emissions calculations can be configured to meet specific requirements.

- ▶ Reports and displays in ppm, mg/Nm<sup>3</sup>, lb/cu ft, lb/mmBTU, ng/J, mass flow rate, etc.
- ▶ Calculation of volumetric flow, water content
- ▶ Normalisation to temperature, pressure, oxygen CO<sub>2</sub> and water content
- ▶ Total Mass Emissions
- ▶ Rolling or clock averages
- ▶ Alarms
- ▶ Statistical Limit calculations
- ▶ Management of multi-fuel systems
- ▶ Configurable for process Start-up and Shutdown

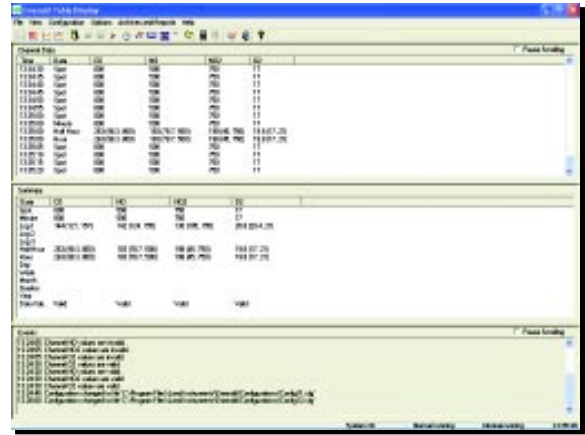


Trend Graph display

## Versatile Data Acquisition

Emerald can capture and store data automatically, and produce a range of calculations and reports at user-defined intervals. Configurable for analogue, digital or mixed inputs.

- ▶ Automatic data storage
- ▶ Daily, monthly and annual records
- ▶ Automatic or manual archive facility
- ▶ Calculation of min., mean and max. values

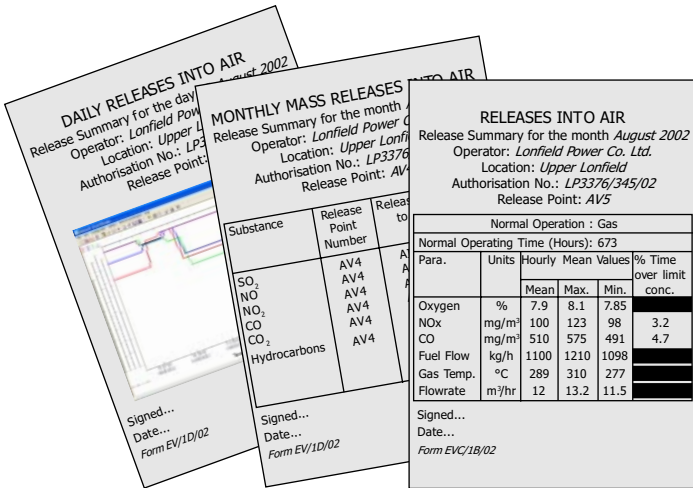


Data Table and Event Log

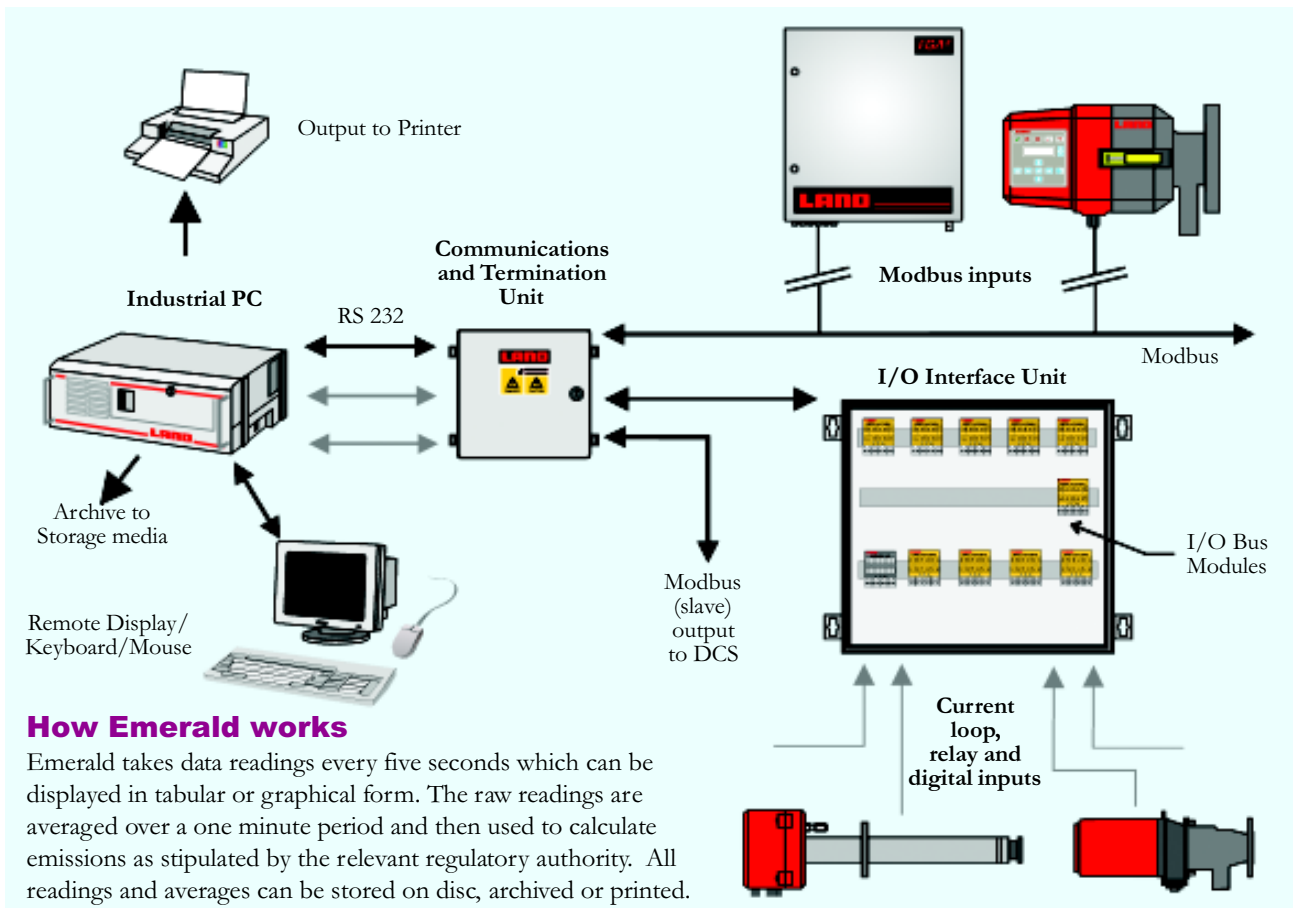
## Environmental Emissions Reporting

Emerald has a wide range of data reporting options available, to meet the requirements of local, national and international environmental authorities.

- ▶ Automatic or manual reporting
- ▶ Calculation of Average and peak values
- ▶ Time above emissions limit reporting
- ▶ Total emissions accumulation
- ▶ Correction to specified reference conditions



Full range of reporting formats



### How Emerald works

Emerald takes data readings every five seconds which can be displayed in tabular or graphical form. The raw readings are averaged over a one minute period and then used to calculate emissions as stipulated by the relevant regulatory authority. All readings and averages can be stored on disc, archived or printed.

## Further Information

### U.K.

Land Instruments International  
Dronfield, Derbyshire  
S18 1DJ  
Telephone: +44 (0) 1246 417691  
Facsimile: +44 (0) 1246 290274  
E-Mail: [combustion.info@landinst.com](mailto:combustion.info@landinst.com)

### Italy

Land Instruments Srl  
Via dell'Industria, 2  
20037 Paderno Dugnano, Milano  
Telephone: +39 02 91 08 0020  
Facsimile: +39 02 91 08 0014  
E-Mail: [combustion@landinst.it](mailto:combustion@landinst.it)

### France

Land Instruments Sarl  
7 Parc des Fontenelles  
78870 Bailly  
Telephone: +33 (0)1 30 80 89 20  
Facsimile: +33 (0)1 30 80 89 21  
E-Mail: [combustion@landinst.fr](mailto:combustion@landinst.fr)

### Poland

Land Instruments Sp z o.o.  
ul. Michalowskiiego 5/2  
31-126 Kraków  
Telephone: +48 (0) 12 632 82 62  
Facsimile: +48 (0) 12 632 24 74  
E-Mail: [land@land.com.pl](mailto:land@land.com.pl)  
Web: [www.land.com.pl](http://www.land.com.pl)

### U.S.A.

Land Instruments International  
10 Friends Lane  
Newtown, PA 18940-1804  
Telephone: +1 215 504 8000  
Toll Free: (in USA) 800 523 8989  
Facsimile: +1 215 504 0879  
E-Mail: [combsales@landinstruments.net](mailto:combsales@landinstruments.net)  
Web: [www.landinstruments.net](http://www.landinstruments.net)

### Mexico

Land Instruments International  
Paseo de la Reforma  
No. 350 Piso 11  
Col Juarez, D.F. CP 06600  
Telephone: +52 (0) 55 9171 1466  
Facsimile: +52 (0) 55 9171 1499  
E-Mail: [ventas@landinstruments.net](mailto:ventas@landinstruments.net)

## Communications and Termination Unit

The Communications and Termination Unit (CTU) provides a convenient way to manage all the connections between the fixed plant wiring and the Emerald computer system. The unit is a small box which can be mounted up to 15m (50 ft) from the computer. An RS485 data channel is fitted as standard, which can be used for either Modbus or connection to the I/O Interface Unit. Optional second and third channels can be fitted where required.



## I/O Interface Unit

This is a wall-mounted, stainless steel box containing a universal power supply and the I/O modules. Communications (to the CTU) are made using a high-speed data bus. The I/O interface unit can be mounted up to 1 mile (2 kilometres) from the Communications and Termination Unit. A low temperature version is available, which is fitted with an anti-condensation heater.

## Specifications

### Standard System Components

**Industrial Grade Pentium PC** (either rack-mountable or desktop) including: display, keyboard, mouse, colour printer and removable storage media

**Communications and Termination Unit** with one serial data port for Modbus communications (plus space for 2 additional ports), suitable for wall mounting

### **Emerald software system**

Site specific configuration of software, with data acquisition, averaging, normalisation, storage and archiving

Custom created reports including monthly, quarterly and annual data

### **I/O Interface Unit** (max. of 10 modules per Interface Unit)

*Current Loop Input (CLIP) module\*, for up to 8 inputs*

*Digital Input (DDIP) module, for up to 8 inputs*

*Relay Output Module, for up to 5 outputs*

*Current Loop Output (CLOP) module\*, for up to 8 outputs*

\* Note: Current loop modules can be wired individually for active or passive supply operation.

### Optional Components

Additional data channels for Communications and Termination Unit

Alternative languages

Rack-mounted configuration

I/O Heater Unit (for low ambient temperature)

*Continuous product development may make it necessary to change these details without notice*

**LAND**  
instruments international

[www.landinst.com/comb/](http://www.landinst.com/comb/)

Land Instruments International has a comprehensive range of Combustion and Environmental Monitoring Instrumentation.



*Approval applies to products designed and manufactured in the UK*

PDS 201/11/03